

OJ Air2 Hand-held terminal



OJ-Air2Hterm

- Plug & Play
- Operation with one hand
- Hand-held or wall-mounted
- Graphical screen
- QuickPlug™ installation

The OJ-Air2Hterm is a user-friendly hand-held terminal for operating an air handling unit and is used together with an OJ-Air2Master.

The OJ-Air2Hterm contains all functions that a person responsible for operation, an installation technician or a service technician would have a need for and is operated extremely quickly with its "Turn & Push" button.

The OJ-Air2Hterm is used in the room housing the technical installations. If there is a need for service, such is clearly indicated with a blinking red light and alarm messages using clear text on the graphical screen.

One-hand operation and surveillance

The person responsible for operation can learn the menu in the course of a few minutes and, among other things, has access to a weekly program, temperature setpoints and alarms. The "Turn & Push" button is operated with one hand.

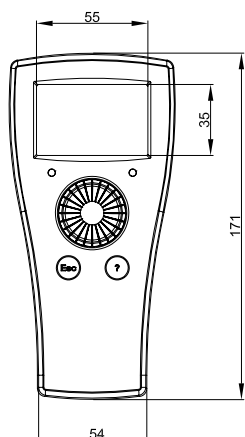
Installation technician's tools

Adjustment of the air handling unit's operation for the specific building concerned is performed in the installation technician menu, which is easy to grasp and password-protected. There is no risk that the person responsible for operation could inadvertently change the fundamental settings.

Service technician's tools

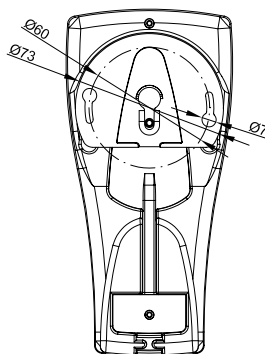
Servicing of the air handling unit's components is performed efficiently from the service menu. This provides access to all values for the system and the possibility to override the individual outputs. The menus are structured such that there is both an overview of the whole operation as well as the possibility to focus on subfunctions.





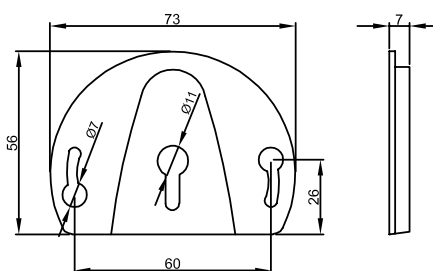
Dimensioned drawing

BR-0931-B01a



Dimensioned drawing

BR-0931-B02a



Dimensioned drawing, wall mount

BR966A25a

Simple installation

The OJ-Air2Hterm is connected to the OJ-Air2Master with QuickPlug™ Modbus, eliminating time-consuming installation faults and troubleshooting. The menus are automatically adjusted for the OJ-Air2Master version and factory configuration concerned.

You thus always have the proper version in your hand because there is only one.

INSTALLATION

Installation of hand-held terminal

The OJ-Air2Hterm is parked in the accompanying wall bracket when it is not in use. The wall bracket should be fastened to a flat and firm substrate. Typical placement is on the exterior of the air handling unit or protected under a cover.

Cable connections

The OJ-Air2Hterm is connected to the OJ-Air2Master with a QuickPlug™ Modbus connection using a standard telecom cable, e.g. INEC TD6006, fitted with RJ12 connectors.

PRODUCT PROGRAMME

TYPE	PRODUCT
OJ-Air2Hterm	OJ Air2 Hand-held terminal
OJ-Air2Master	AHU controller

TECHNICAL DATA

Display	240 x 128 pixel Monochrome
Supply voltage OK	1 x green LED
Alarm active	1 x red LED
Operating buttons	1 x "Turn & Push" 1 x Escape 1 x Help (?)
Supply voltage	24 V DC ±15% via QuickPlug™
Power consumption	< 1.1 W
QuickPlug™ Modbus	2 x RJ12 (6P6C)
Max. cable length	50 m (in low EMC environment)
Amb. operating temperature	0/+50°C
Dimensions	170 x 40 x 82 mm
Enclosure	IP20
Weight	150 g

CE marking

The OJ-Air2Hterm complies with the requirements of the following directives:

- EMC Directive
- EN 61000-6-2
- EN-61000-6-3